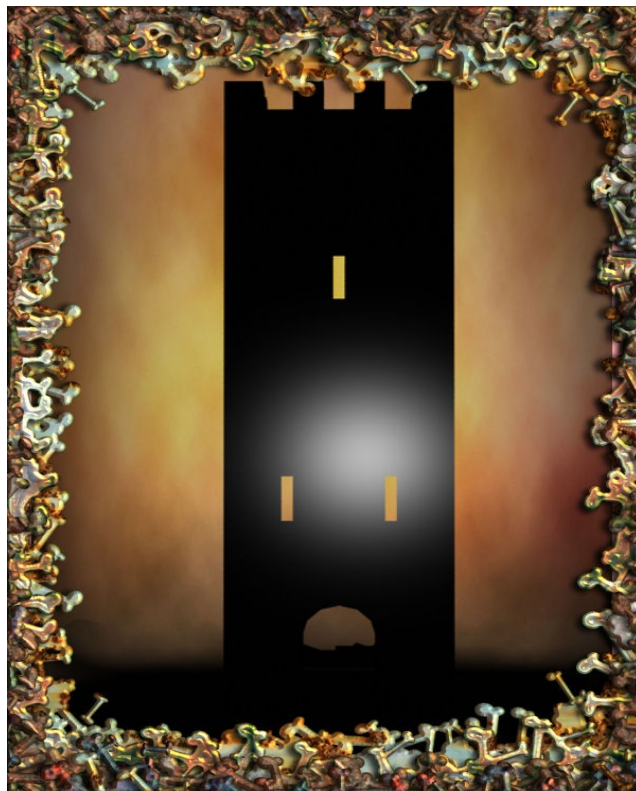


DRAGONLAIR *PRODUCTIONS*

TOWER OF DARKNESS GAME PROPOSAL AND OUTLINE



SECTION 1

BRIEF GAMEPLAY OUTLINE

Game Engine: A6

Game Type: Adventure, Chance, Card

Game Rating: M (Possibly AO)

Camera : Isometric (Diablo)

Map: Single

Map Areas: 5

Player: 1

SECTION 2

GAME CHALLENGE AND OBJECTIVE

Objective: You will play as a Warrior Princess and travel through the map through 4 different Kingdoms in search of 3 Ancient Mystic Keys needed to open and successfully attack the Tower of Darkness.

Game Challenge: Retrieve the Ancient Mystic Scepter of Light that has been stolen by a tyrant Queen(Lady Evil). The Scepter is the Power Staff of the Empire and a Kingdom of you own has been offered for it's return. It now lays hidden in the

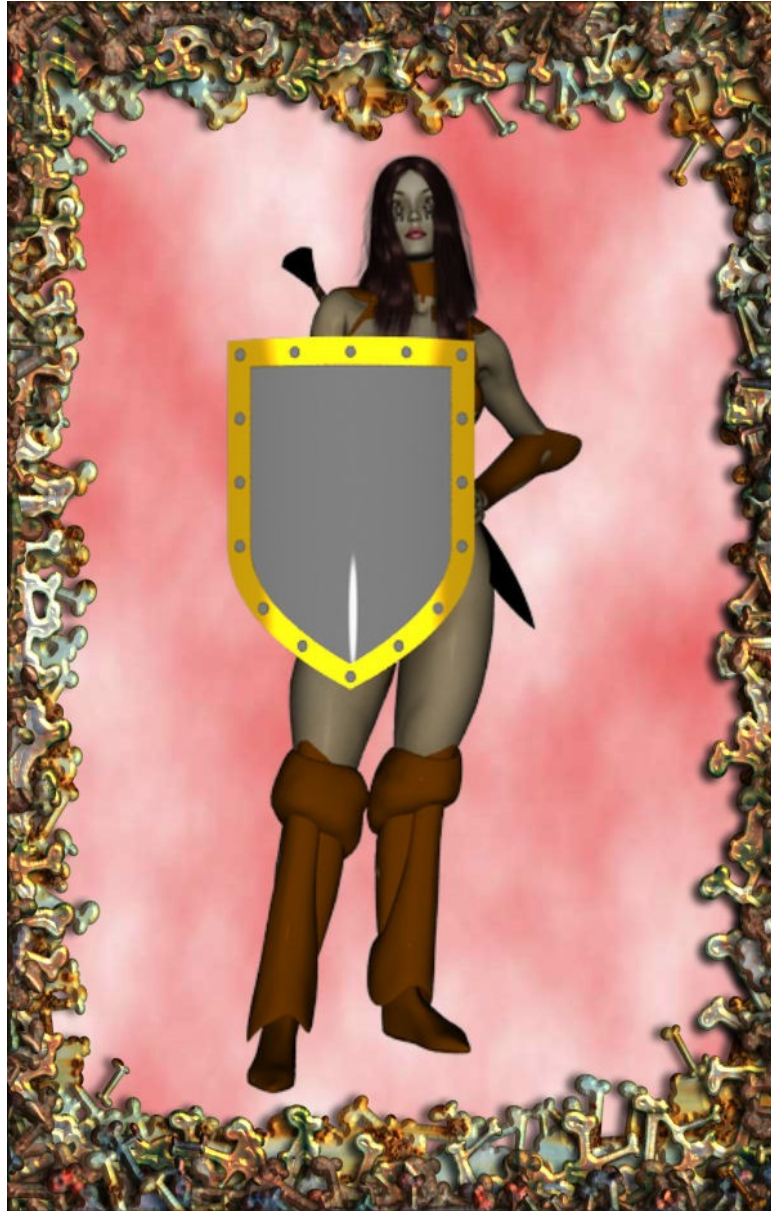
Tower of Darkness guarded by the Evil Queens fierce warriors. You need three Magical Keys to open the Tower. You will leave your home Kingdom with 10 Warriors, 30 bags of gold, and 25 rations of food. On your journey you will fight warriors, dragons, and evil wizards. You will lose warriors to these and starvation and plague, and get lost in unknown territories.

You can visit Bazaars to buy warriors and supplies. You can explore Tombs and Ruins to find gold, dragonswords, helpful wizards mystic keys and other surprises. There are also Sanctuaries that will help you with Warriors, gold and food.

Once you find all three Mystic Keys, and solve the Riddle of the Keys, you may open the Tower and fight the final battle.

Section3

Player



Section 4

Other Characters and NPC's



Section 5

ENIMIES

LADY EVIL



Main Boss. You'll fight her at the Tower.

EVIL HORDES



EVIL SCORCERESS



Works for Lady Evil. Can inflict Curse Status when encountered.

DRAGON



Section 6

BAZAAR ITEMS

WARRIORS



FOOD RATIONS



Cost = ???

Use = To feed you and your Warriors.

BEAST



Cost = ???

Use = Allows you to carry extra Gold.

SCOUT



HEALER



Section 7

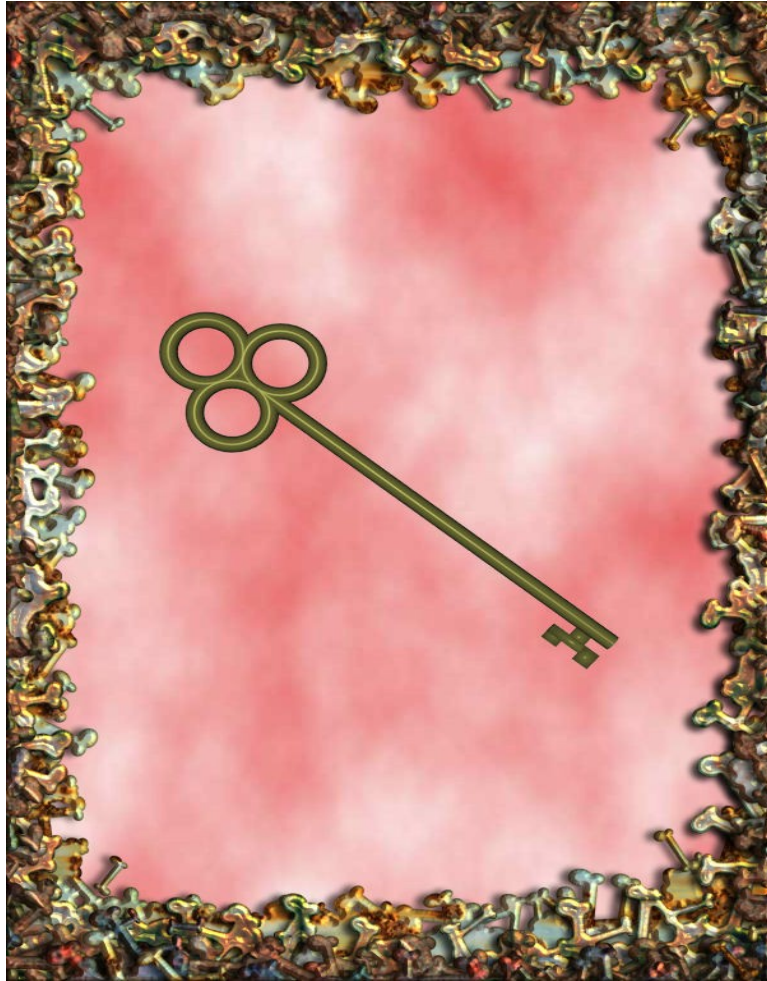
OTHER ITEMS

FOUND OR WON IN BATTLE

GOLD

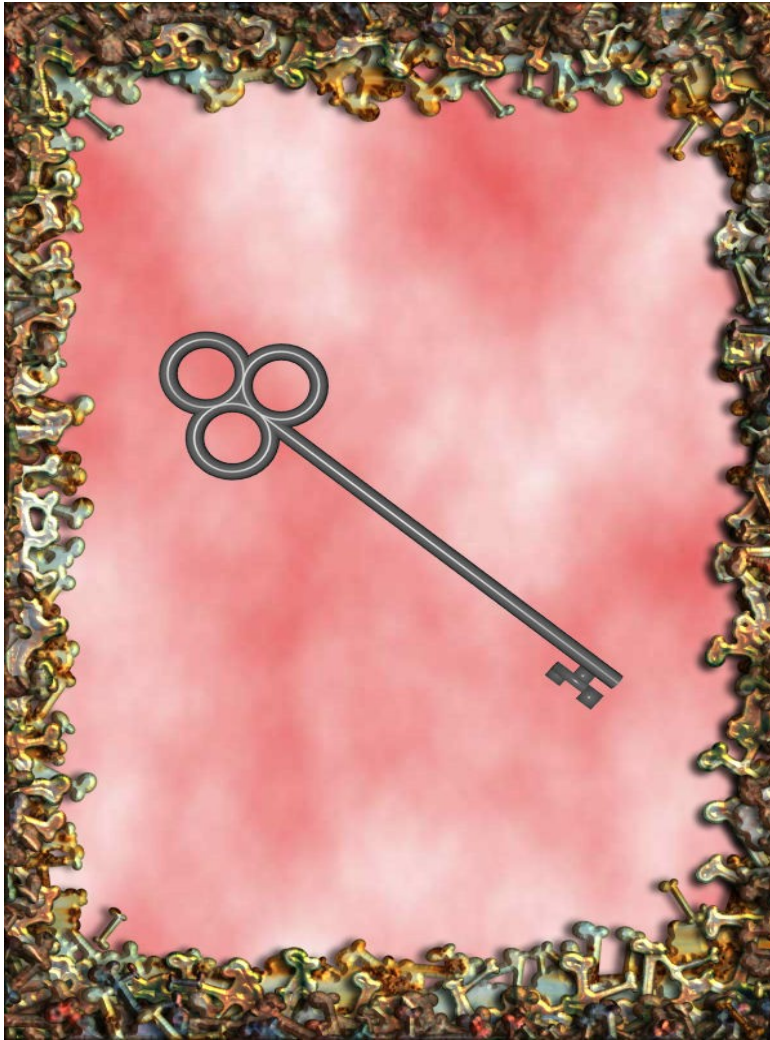


BRASS KEY



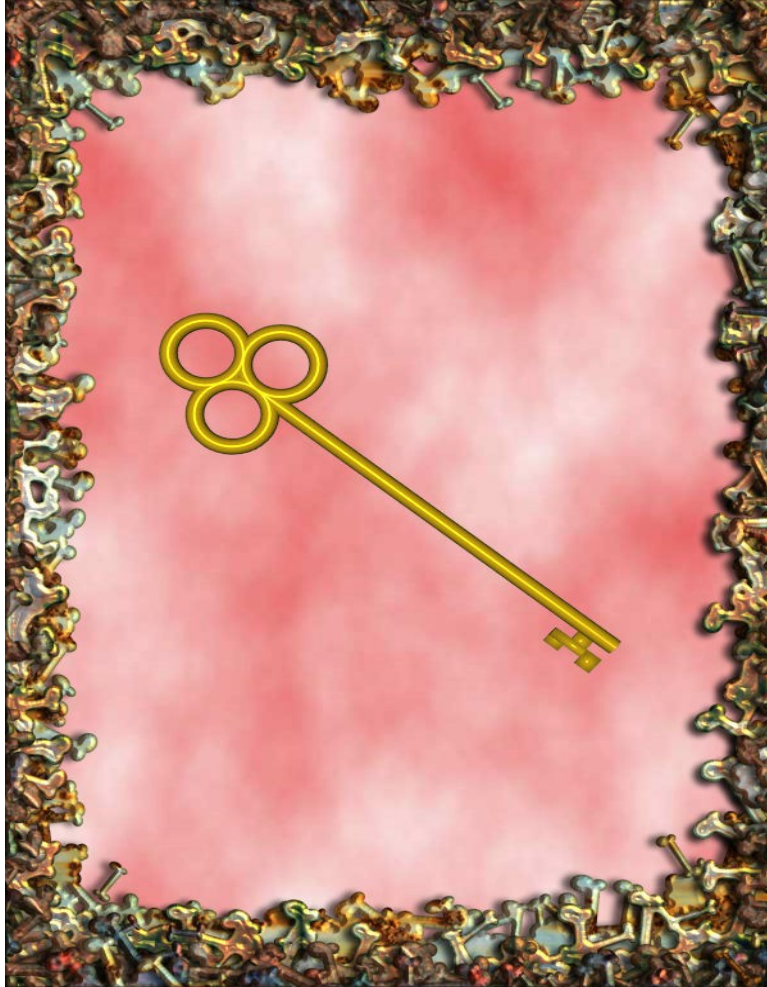
One of Three Mystic Keys needed to open the
Tower of Darkness

SILVER KEY



One of Three Mystic Keys needed to open the Tower of Darkness.

GOLD KEY



One of Three Mystic Keys needed to open the Tower of Darkness.

DRAGONSWORD



???



Section 8

Status Conditions

LOST



DISEASE



CURSED



Section 9

Map and Map Areas

Section 10

Gameplay